



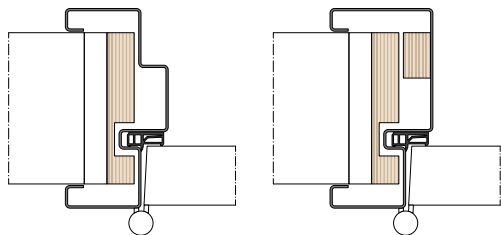
## OMLIJSTINGEN / KADERS

### METAAL

#### UITVOERINGEN

##### DRAAIDEUR

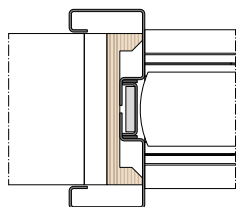
Gepoederlakt staal  
Inox  
Corrosiebestendig gepoederlakt staal (Milieuklasse C5)



Blokvariant

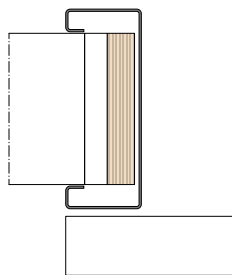
##### ZWAAIDEUR

Gepoederlakt staal  
Inox  
Corrosiebestendig gepoederlakt staal (Milieuklasse C5)



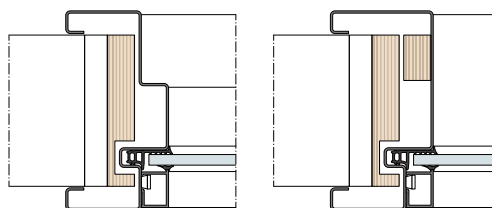
##### SCHUIFDEUR

Gepoederlakt staal  
Inox  
Corrosiebestendig gepoederlakt staal (Milieuklasse C5)



##### VAST RAAM

Gepoederlakt staal  
Inox  
Corrosiebestendig gepoederlakt staal (Milieuklasse C5)

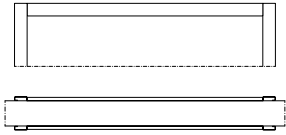


Blokvariant

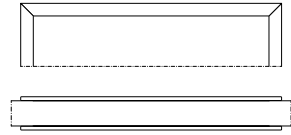
## CHAMBRANTEN

### HOEKVERBINDING

Type T (Standaard)

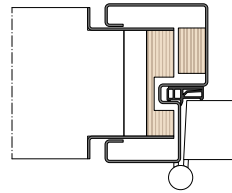


Type V

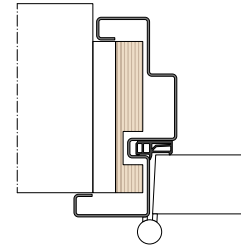


## OPTIES

Schaduwvoeg



Asymmetrie

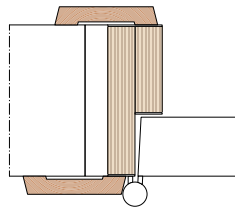
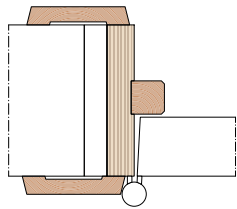


## HOUT

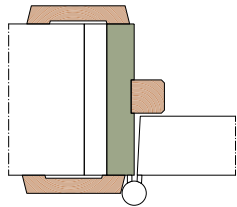
### UITVOERINGEN

#### DRAAIDEUR

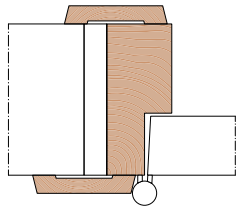
Multiplex



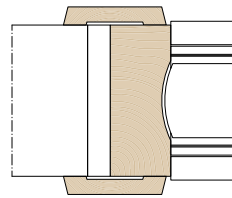
MDF



Massief

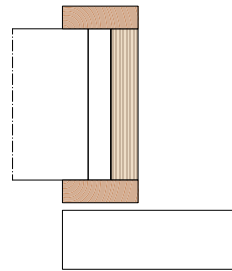


Rubberwood

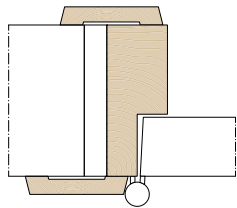


#### SCHUIFDEUR

Multiplex

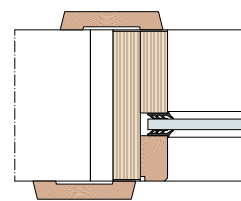
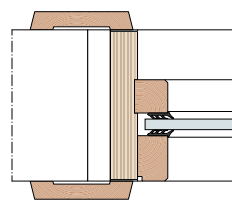


Rubberwood



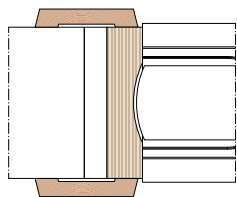
#### VAST RAAM

Multiplex

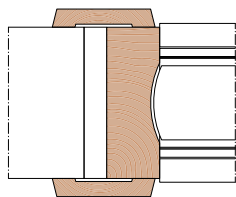


#### ZWAAIDEUR

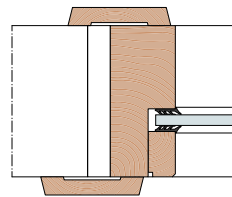
Multiplex



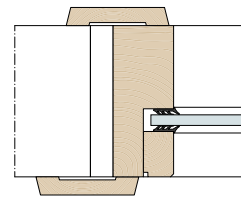
Massief



Massief



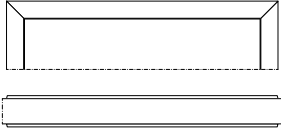
Rubberwood



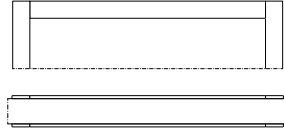
## CHAMBRANTEN

### HOEKVERBINDING

Type V (Standaard)



Type G



### TYPE

Trapezium

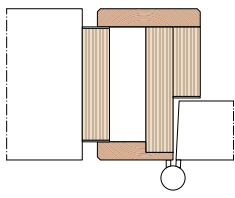


Recht



## OPTIES

Schaduwvoeg



Asymmetrie

